

Evidence on how the spending and allocation of Pupil Premium 2017 - 2018 funding has impacted on the progress and attainment of our children.

(Evidence from FFT 2018 and School Data Summer 2018)

The total amount of Pupil Premium Grant allocated to St John Fisher for 2017 - 2018 is

£46,200.00

Overview

KS2 Attainment 2018 - Actual results

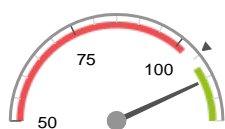
29 pupils

KS2 Progress 2018 - Value Added

29 matched pupils

Average Scaled Score (Re, Ma)

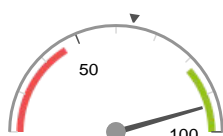
110.4+



Significantly above the national average (104.7) ◀

% Expected standard+ (Re, Wr, Ma)

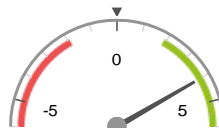
93%+



Significantly above the national average (64%) ◀

Average Scaled Score (Re, Ma)

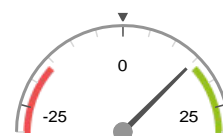
+4.0+



Significantly above the national average (0) ◀

% Expected standard+ (Re, Wr, Ma)

+15%



In line with the national average (0%) ◀

KS2 higher and lower performing pupil groups 2018

	Higher performing	Lower performing
Overall achievement pupil progress	Summer Term (7) + Middle attainers (13) + Female (19) + ↑	
KS2 reading achievement pupil progress	Spring Term (9) ++ Female (19) + Middle attainers (13) +	
KS2 writing achievement pupil progress	Summer Term (7) Higher attainers (12) Middle attainers (13) ↑	
KS2 mathematics achievement pupil progress	Summer Term (7) Male (10) Middle attainers (13) +	
KS2 grammar, punctuation & spelling achievement pupil progress	Autumn Term (13) Middle attainers (13) Summer Term (7) +	

Attainment & progress

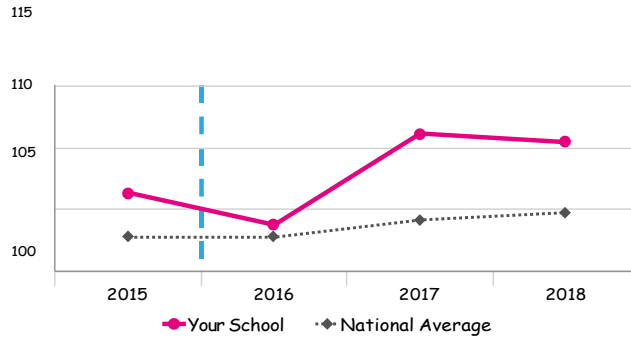
KS2 Attainment 2018
29 pupils

Average Scaled Score (Re, Ma)

110.4 +



Significantly above the national average (104.7)



KS2 Progress 2018
29 matched pupils

Average Scaled Score (Re, Ma)

+4.0 +

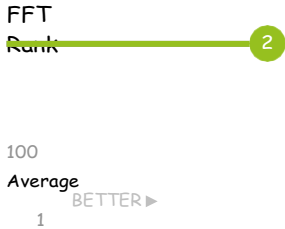
FFT Rank



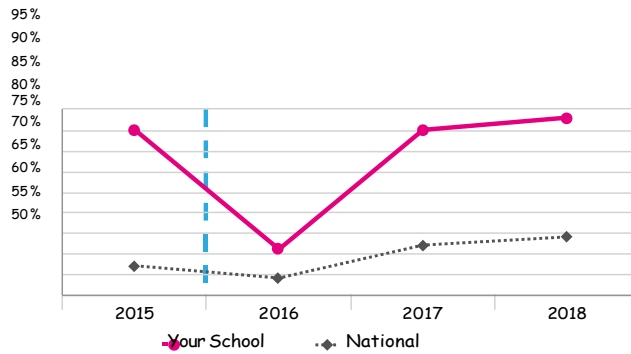
Significantly above the national average (0)

% Expected standard+ (Re, Wr, Ma)

93% +



Significantly above the national average (64%)



% Expected standard+ (Re, Wr, Ma)

+15%

FFT Rank



In line with the national average (0%)

KS2 performance summary

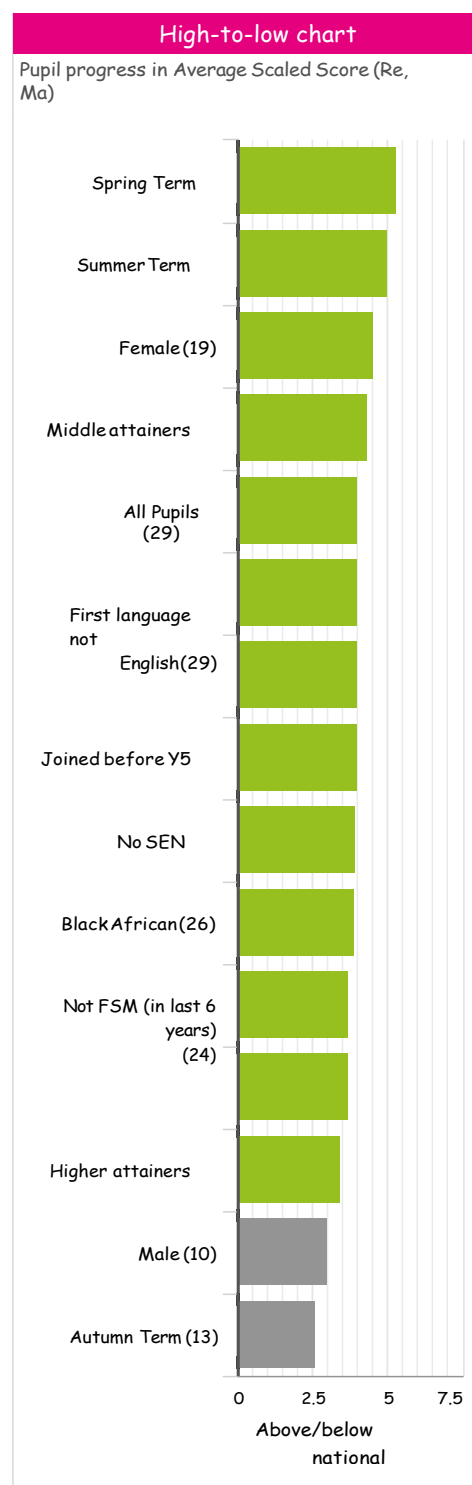
	2016	2017	2018	2016	2017	2018
Number of Pupils / % Matched	28	30	29	96%	100%	100%
% Expected standard+ (Re, Wr, Ma)	61%	90% +	93% +	+1%	+7%	+15%
% Higher standard (Re, Wr, Ma)	7%	23% +	31% +	+3%	+5%	+19% +
Average Scaled Score (Re, GPS, Ma)	105.3	112.0 + ↑	111.6 +	+1.3	+3.9 + ↑	+4.9 +
Average Scaled Score (Re, Ma)	103.7	111.1 + ↑	110.4 +	+0.1	+3.4 + ↑	+4.0 +
% Expected standard+ Reading	61%	100% +	100% +	-13%	+11%	+13% +
% Higher standard Reading	11%	53% + ↑	52% +	-9%	+13%	+20% +
Scaled Score Reading	101.1	110.9 + ↑	110.2 +	-2.3	+3.1 + ↑	+3.4 +
% Expected standard+ Writing	89%	90%	93%	+8%	-3%	+1%
% Higher standard Writing	7%	23%	34%	-9%	-8%	+12%
Scaled Score Writing	102.4	104.1	105.6 +	+0.3	-1.0	+1.4 ↑
% Expected standard+ Maths	100% +	100% +	100% +	+23% +	+8%	+13% +
% Higher standard Maths	25%	73% + ↑	52% +	+9%	+35% + ↑	+24% +
Scaled Score Maths	106.2 +	111.3 + ↑	110.7 +	+2.4 +	+3.7 +	+4.7 +
% Expected standard+ Grammar, Punctuation & Spelling	96% +	100% +	100% +	+12%	+7%	+10%
% Higher standard Grammar, Punctuation & Spelling	36%	83% + ↑	79% +	+12%	+34% +	+39% +
Scaled Score Grammar, Punctuation & Spelling	107.6	114.4 + ↑	114.8 +	+2.6	+4.9 + ↑	+6.7 + ↑
% Expected standard+ Science	100% +	100% +	100% +	-	-	-

Pupil groups

KS2 Pupil groups performance 2018



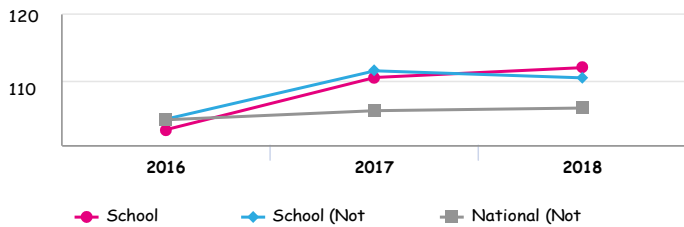
	Pupils	Actual results			Pupil progress			
		Average Scaled Score (Re, Ma)	% Expected standard + (Re, Wr, Ma)	% Higher standard (Re, Wr, Ma)	Average Scaled Score (Re, Ma)	% Expected standard + (Re, Wr, Ma)	% Higher standard (Re, Wr, Ma)	
Summary	All Pupils >	29	110.4 +	93% +	31% +	+4.0 +	+15%	+19% +
Gender	Male >	10	109.4	90%	20%	+3.0	+13%	+12%
	Female >	19	111.0 +	95% +	37% +	+4.6 +	+17%	+23% +
Prior Attainment	Higher attainers >	12	113.5 +	100%	58% +	+3.4 +	+5%	+31% +
	Middle attainers >	13	109.0 +	100% +	15% +	+4.4 +	+30% +	+13% +
	Lower attainers >	3	105.3	33%	0%	+4.8	-8%	-0%
Pupil Premium	FSM (in last 6 years) >	4	111.9	100%	25%	+5.9	+22%	+21%
	Not FSM (in last 6 years) >	24	110.3 +	92% +	33% +	+3.7 +	+14%	+19% +
FSM	Not FSM >	28	110.5 +	93% +	32% +	+4.0 +	+15%	+19% +
FSM Ever	FSM (ever) >	4	111.9	100%	25%	+5.9	+22%	+21%
	Not FSM (ever) >	24	110.3 +	92% +	33% +	+3.7 +	+14%	+19% +
Term of Birth	Autumn Term >	13	109.8 +	100% +	23%	+2.6	+18%	+14%
	Spring Term >	9	110.6 +	78%	33% +	+5.3 +	+8%	+20%
	Summer Term >	7	111.3 +	100%	43% +	+5.0 +	+21%	+28%
SEN Group	SEN Support >	1	106.5	0%	0%	+6.0	-39%	-0%
	No SEN >	28	110.6 +	96% +	32% +	+3.9 +	+17% +	+20% +
EAL	First language not English >	29	110.4 +	93% +	31% +	+4.0 +	+15%	+19% +
Mobility	Joined in Y5 or Y6 >	1	108.0	100%	0%	+4.1	-	-
	Joined before Y5 >	28	110.5 +	93% +	32% +	+4.0 +	+15%	+19% +
Ethnicity	White >	1	112.5	100%	100%	+6.7	+18%	+96%
	Black Caribbean >	2	104.5	50%	0%	+4.0	+10%	-0%
	Black African >	26	110.8 +	96% +	31% +	+3.9 +	+15%	+18% +



Disadvantaged pupils

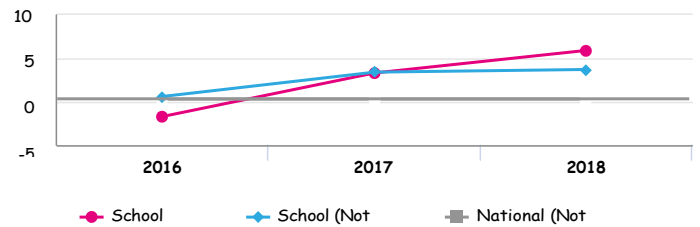
KS2 attainment for disadvantaged pupils 2018

Average Scaled Score (Re, Ma)



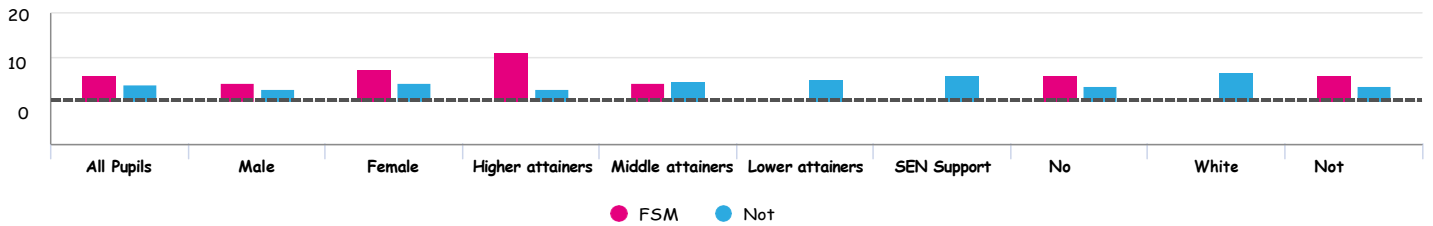
KS2 progress for disadvantaged pupils 2018

Average Scaled Score (Re, Ma)



Progress gap

Average Scaled Score (Re, Ma)



Attainment & progress

Pupils	FSM6	Not FSM6	Attainment †			Progress ‡			
			Average Scaled Score (Re, Ma)			Average Scaled Score (Re, Ma)			
			FSM6	Not FSM6	Gap	FSM6	Not FSM6	Gap	
Summary	All Pupils	4	24	111.9	110.3 +	1.6	5.9	3.7 +	2.2
Gender	Male	2	8	109	109.5	-0.5	4.3	2.7	1.6
	Female	2	16	114.8	110.7	4.1	7.4	4.2	3.2
Prior Attainment	Higher attainers	1	11	119	113	6	11	2.8	8.2
	Middle attainers	3	10	109.5	108.9	0.6	4.2	4.4	-0.2
	Lower attainers	-	3	-	105.3	-	-	4.8	-
SEN Group	SEN Support	-	1	-	106.5	-	-	6	-
	No SEN	4	23	111.9	110.5	1.4	5.9	3.6	2.3
Ethnic Group	White	-	1	-	112.5	-	-	6.7	-
	Not White	4	23	111.9	110.2	1.7	5.9	3.6	2.3

Context

Context - Year 6 - 2017 / 2018

Absence - Year 6 - 2017 / 2018

		Pupils	Proportion	
			School	National
Summary	All Pupils	29	100%	100%
Gender	Male	10	34%	51%
	Female	19	66%	49%
Prior Attainment	Higher attainers	12	41%	31%
	Middle attainers	13	45%	35%
	Lower attainers	3	10%	29%
Pupil Premium	FSM (in last 6 years)	4	14%	30%
	Not FSM (in last 6 years)	24	83%	69%
FSM	Not FSM	28	97%	85%
FSM Ever	FSM (ever)	4	14%	31%
	Not FSM (ever)	24	83%	69%
Term of Birth	Autumn Term	13	45%	33%
	Spring Term	9	31%	32%
	Summer Term	7	24%	35%
SEN Group	SEN Support	1	3%	15%
	No SEN	28	97%	82%
EAL	First language not English	29	100%	20%
Mobility	Joined in Y5 or Y6	1	3%	7%
	Joined before Y5	28	97%	93%
Ethnicity	White	1	3%	74%
	Black Caribbean	2	7%	3%
	Black African	26	90%	6%

		Pupils	School		National	
			School	National	School	National
Summary	All Pupils	29	2%	4%	0%	5%
Gender	Male	10	1%	4%	0%	6%
	Female	19	2%	4%	0%	5%
Prior Attainment	Higher attainers	12	1%	3%	0%	2%
	Middle attainers	13	2%	4%	0%	4%
	Lower attainers	3	1%	5%	0%	10%
Pupil Premium	FSM (in last 6 years)	4	2%	5%	0%	12%
	Not FSM (in last 6 years)	24	2%	3%	0%	3%
FSM	Not FSM	28	2%	4%	0%	4%
FSM Ever	FSM (ever)	4	2%	5%	0%	11%
	Not FSM (ever)	24	2%	3%	0%	3%
Term of Birth	Autumn Term	13	1%	4%	0%	6%
	Spring Term	9	2%	4%	0%	6%
	Summer Term	7	1%	4%	0%	5%
SEN Group	SEN Support	1	1%	5%	0%	10%
	No SEN	28	2%	4%	0%	4%
EAL	First language not English	29	2%	4%	0%	5%
Mobility	Joined in Y5 or Y6	1	-	6%	-	15%
	Joined before Y5	28	2%	4%	0%	5%
Ethnicity	White	1	5%	4%	0%	6%
	Black Caribbean	2	0%	5%	0%	9%
	Black African	26	2%	3%	0%	3%

Key Stage 2 – Data 2018

% of Pupils achieving the expected standard in Reading, Writing and Mathematics - SJF	<u>93%</u>
% of Pupils achieving the expected standard in Reading, Writing and Mathematics - BEXLEY	69%
% of Pupils achieving the expected standard in Reading, Writing and Mathematics - NATIONAL	64%
Average Progress in Reading	3.5
Average Progress in Writing	1
Average Progress in Maths	4
% of Pupils achieving a high level of attainment in Reading, writing and Mathematics - SJF	<u>31%</u>
% of Pupils achieving a high level of attainment in Reading, Writing and Mathematics - BEXLEY	13.5%
% of Pupils achieving a high level of attainment in Reading, Writing and Mathematics - NATIONAL	10%
Average Scaled Score in Reading	110.2
Average Scaled Score in Mathematics	110.7
Average Scaled Score in SPaG	114.8
READING - % of pupils achieving expected standard	100%
READING - % of pupils achieving a high standard	51%
WRITING - % of pupils achieving expected standard	93%
WRITING - % of pupils working at greater depth standard	34.5%
MATHS - % of pupils achieving expected standard	100%
MATHS - % of pupils achieving a high standard	51%
SPaG - % of pupils achieving expected standard	100%
SPaG - % of pupils achieving a high standard	79.3%

Key Stage 1 - Data 2018

SJF -% of Pupils achieving the expected standard in Reading, Writing and Mathematics	86.7%
BEXLEY -% of Pupils achieving the expected standard in Reading, Writing and Mathematics	75.9%
SJF -% of Pupils achieving a high level of attainment in Reading, Writing and Mathematics	23.3%
BEXLEY -% of Pupils achieving a high level of attainment in Reading, Writing and Mathematics	21.6%
SJF READING - % of pupils achieving expected standard	86.7%
BEXLEY READING - % of pupils achieving expected standard	80.6%
SJF READING - % of pupils achieving a high standard	23.3%
BEXLEY READING -% of pupils achieving a high standard	30.4%
SJF WRITING - % of pupils achieving expected standard	86.7%
BEXLEY WRITING - % of pupils achieving expected standard	75.9%
SJF WRITING - % of pupils working at greater depth within expected standard	23.3%
BEXLEY WRITING - % of pupils working at greater depth within expected standard	21.6%
MATHS - % of pupils achieving expected standard	86.7%
BEXLEY MATHS - % of pupils achieving expected standard	81.4%
MATHS - % of pupils achieving a high standard	26.7%
BEXLEY MATHS-% of pupils achieving a high standard	27.8%
SCIENCE - % of pupils achieving expected standard	86.7%
BEXLEY SCIENCE - % of pupils achieving expected standard	86.0%
SPaG - % of pupils achieving expected standard	90%
SPaG - % of pupils achieving a high standard	20%

PHONICS RESULTS 2018

All children across the country are tested on their Phonic Knowledge at the end of year 1. Phonics is a way of teaching children to read quickly with accuracy.

YEAR 1	WORKING AT	WORKING TOWARDS
PHONICS SJF 2014	80.0%	20.0%
PHONICS BEXLEY 2014	81.1%	16.9%
PHONICS NATIONAL 2014	74.0%	24.0%
PHONICS SJF 2015	60.0%	40.0%
PHONICS BEXLEY 2015	82.4%	16.8%
PHONICS NATIONAL 2015	77.0%	21.0%
PHONICS SJF 2016	83.3%	16.7%
PHONICS BEXLEY 2016	84.5%	14.3%
PHONICS NATIONAL 2016	77.0%	21.0%
PHONICS SJF 2017	83.3%	16.7%
PHONICS BEXLEY 2017	84.8%	15.2%
PHONICS NATIONAL 2017	81.2%	18.8%
PHONICS SJF 2018	93.3%	6.7%
PHONICS BEXLEY 2018	86.7	13.3%
PHONICS NATIONAL 2018	82.5%	17.5%

Our intensive phonic support programme introduced in 2016 has continued and the impact has been sustained.

YEAR 2	WORKING AT	WORKING TOWARDS
PHONICS SJF 2014	100%	
PHONICS BEXLEY 2014	73.8%	22.5%
PHONICS SJF 2015	100%	
PHONICS BEXLEY 2015	65.4%	28.3%
PHONICS SJF 2016	100%	
PHONICS BEXLEY 2016	65.7%	30.1%
PHONICS SJF 2017	100%	
PHONICS BEXLEY 2017	59.2%	40.8%
PHONICS SJF 2018	80.0%	20.0%
PHONICS BEXLEY 2018	64.4%	35.6%

EYFS DATA 2018

	SJF DATA	BEXLEY DATA	NATIONAL DATA
COMMUNICATION AND LANGUAGE	83.3%	85.8%	81.6%
PHYSICAL DEVELOPMENT	83.3%	90.0%	87.5%
PERSONAL, SOCIAL, EMOTIONAL DEVELOPMENT	83.3%	88.2%	84.8%
LITERACY	83.3%	79.5%	72.1%
MATHS	83.3%	83.2%	77.4%
5 CORE AREAS	83.3%	76.7%	69.3%

% of pupils achieving expected or exceeding in prime and specific areas

	2014	2015	2016	2017	2018
COMMUNICATION AND LANGUAGE	80.0%	56.7%	83.3%	90%	83.3%
PHYSICAL DEVELOPMENT	90.0%	90.0%	100%	100%	83.3%
PERSONAL, SOCIAL, EMOTIONAL DEVELOPMENT	83.3%	70.0%	83.3%	86.7%	83.3%
LITERACY	66.7%	63.3%	86.7%	90%	83.3%
MATHS	70.0%	70.0%	86.7%	93.3%	83.3%
UNDERSTANDING OF THE WORLD	90.0%	63.3%	80.0%	96.7%	83.3%
ART AND DESIGN	93.3%	83.3%	86.7%	96.7%	83.3%

Additional Data for Years Rec, 1, 3, 4 and 5

Year	Subject	Non-PP Children	PP children
REC	Reading	85.7% 24/28 CHILDREN	50% 1/2 CHILDREN
NON PP 28 CH	Writing	85.7% 24/28 CHILDREN	50% 1/2 CHILDREN
PP 2 CH	Maths	85.7% 24/28 CHILDREN	50% 1/2 CHILDREN
Year 1	Reading	92.3% 24/26 CHILDREN	50% 2/4 CHILDREN
NON PP 26 CH	Writing	88.4% 23/26 CHILDREN	50% 2/4 CHILDREN
PP 4 CH	Maths	92.3% 24/26 CHILDREN	50% 2/4 CHILDREN
Year 3	Reading	92% 23/25 CHILDREN	80% 4/5 CHILDREN
NON PP 25 CH	Writing	92% 23/25 CHILDREN	80% 4/5 CHILDREN
PP 5 CH	Maths	92% 23/25 CHILDREN	80% 4/5 CHILDREN
Year 4	Reading	91% 21/23 CHILDREN	45% 3/7 CHILDREN
NON PP 23 CH	Writing	82% 19/23 CHILDREN	45% 3/7 CHILDREN
PP 7 CH	Maths	91% 21/23 CHILDREN	75% 5/7 CHILDREN
Year 5	Reading	87.4% 21/24 CHILDREN	66.6% 4/6 CHILDREN
NON PP 24 CH	Writing	87.4% 21/24 CHILDREN	66.6% 4/6 CHILDREN
PP 6 CH	Maths	87.4% 21/24 CHILDREN	66.6% 4/6 CHILDREN

Areas of Focus for 2018 -2019

Our main focus for 2017 2018 is to maintain and improve upon our strong Data Set. To meet this challenge we have the follow key focus areas to meet.

- Levels of attainment to be 80%+ in all year groups
- Greater depth increase across the school - to be above national
- Writing - key focus to bring in line with Reading especially greater depth
- Being more creative - letting go a bit - giving children greater independence with the direction of their learning
- Developing questioning further - working with St Stephens